

SANTIAGO PEAK

DAN MINEAR, NGRDK



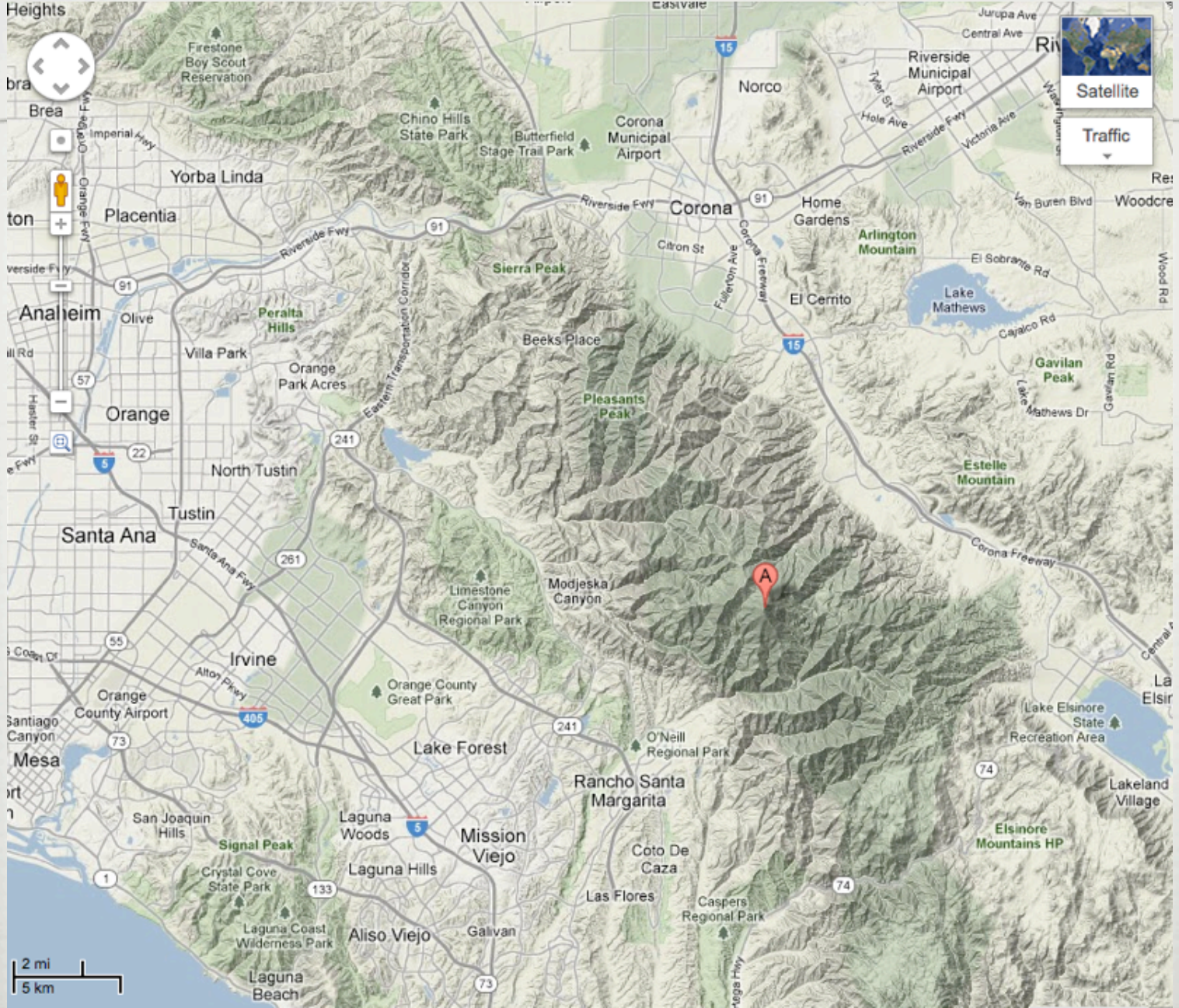
SANTIAGO PEAK

- ❑ **LOCATION: SANTA ANA MOUNTAINS, CALIFORNIA**
- ❑ **LAT/LON: [33.71060°N / 117.5333°W](#)**
- ❑ **ELEVATION: 5687 FT / 1733 M**

HOW TO GET THERE IN A CAR

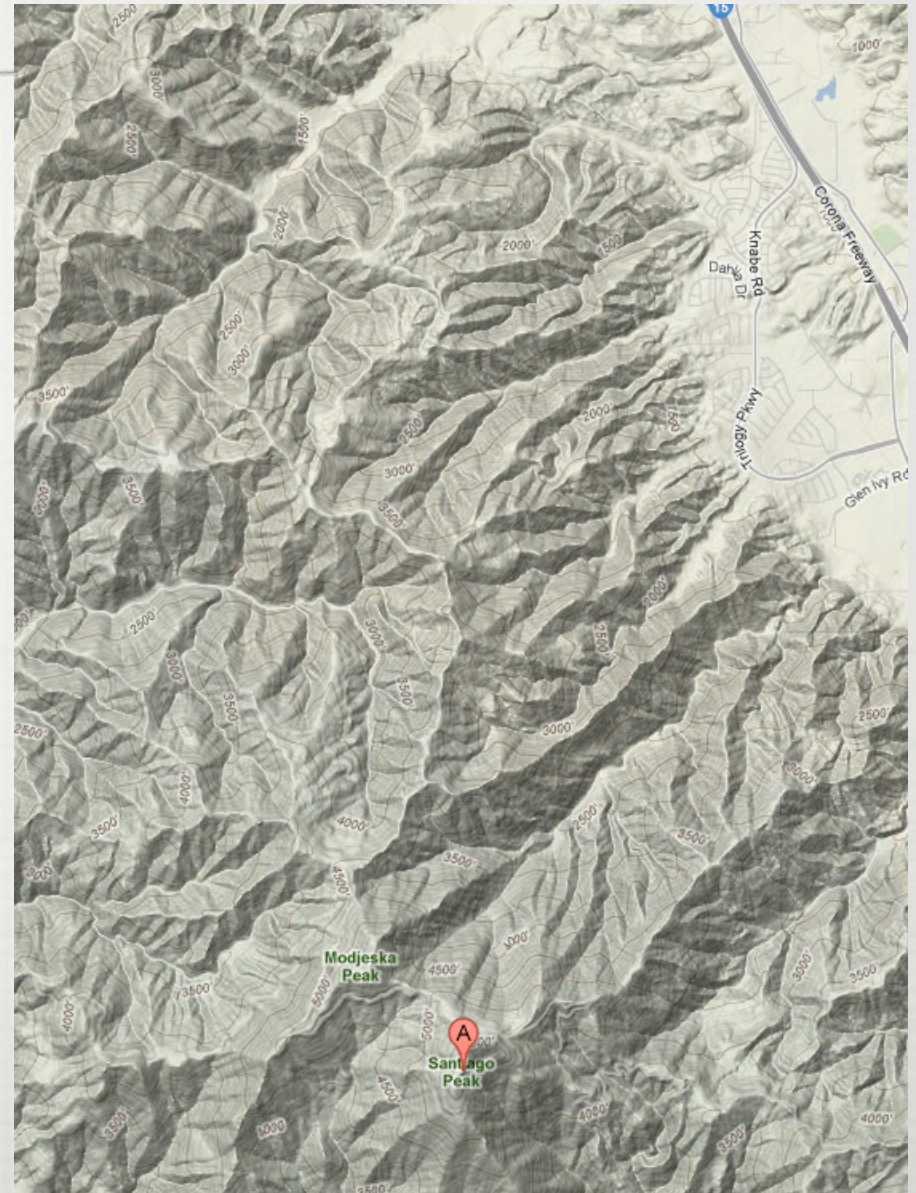
- BEDFORD CANYON
- INDIAN TRUCK TRAIL
- MAPLE SPRINGS
- MAIN DIVIDE FROM ORTEGA HWY
- CORONA

OVERVIEW



BEDFORD CANYON

□ EAST APPROACH,
CLAY AREA THAT IS
SLIPPERY WHEN WET



INDIAN TRUCK TRAIL

☐ QUICKEST ON TRAIL, BUT LONG WAY FROM ORANGE COUNTY



MAPLE SPRINGS

□ FASTEST WAY FROM ORANGE COUNTY



CORONA GATE



“FIELD” UP CORONA ROUTE

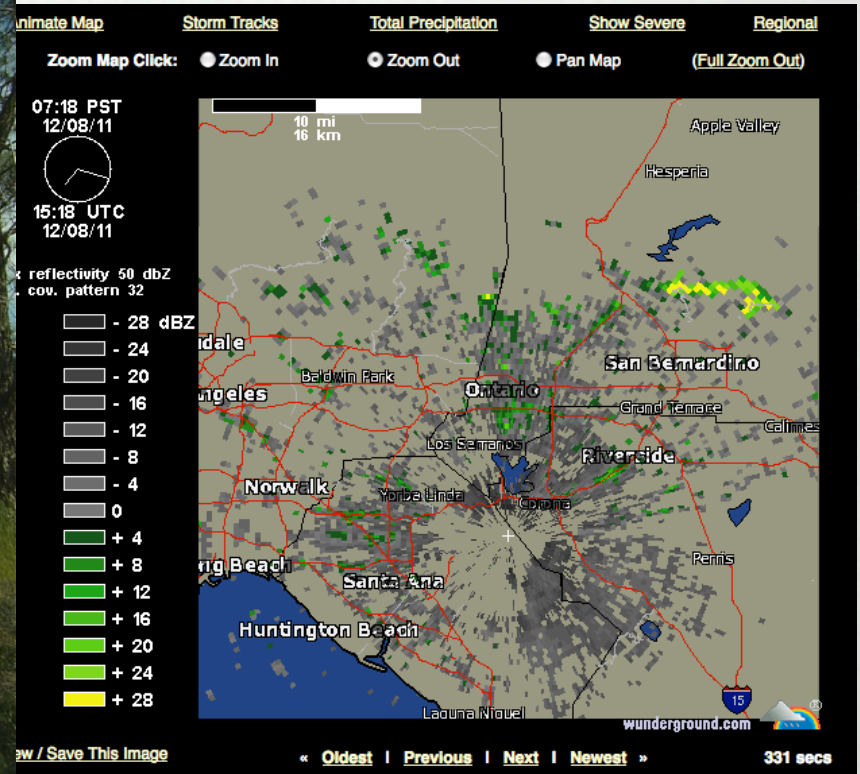


COMING UP TO MAIN DIVIDE



NEX-RAD WEATHER RADAR

☐ SOX LOCATED IN SANTA ANA MOUNTAINS



NEXRAD SOX CLOSE UP

- BETWEEN PLEASANTS PEAK AND SIERRA PEAK



NEARING MODJESKA PEAK

- ROAD IN GOOD CONDITION



AT&T BUILDING

- USED TO HAVE HUGE HORN ANTENNAE
- FIBER TOOK CARE OF THAT



TOUCH-TEL BUILDING

- REPEATER
LOCATED IN
THIS
BUILDING
- LOOKS OUT
OVER
ORANGE
COUNTY



WORKBENCH



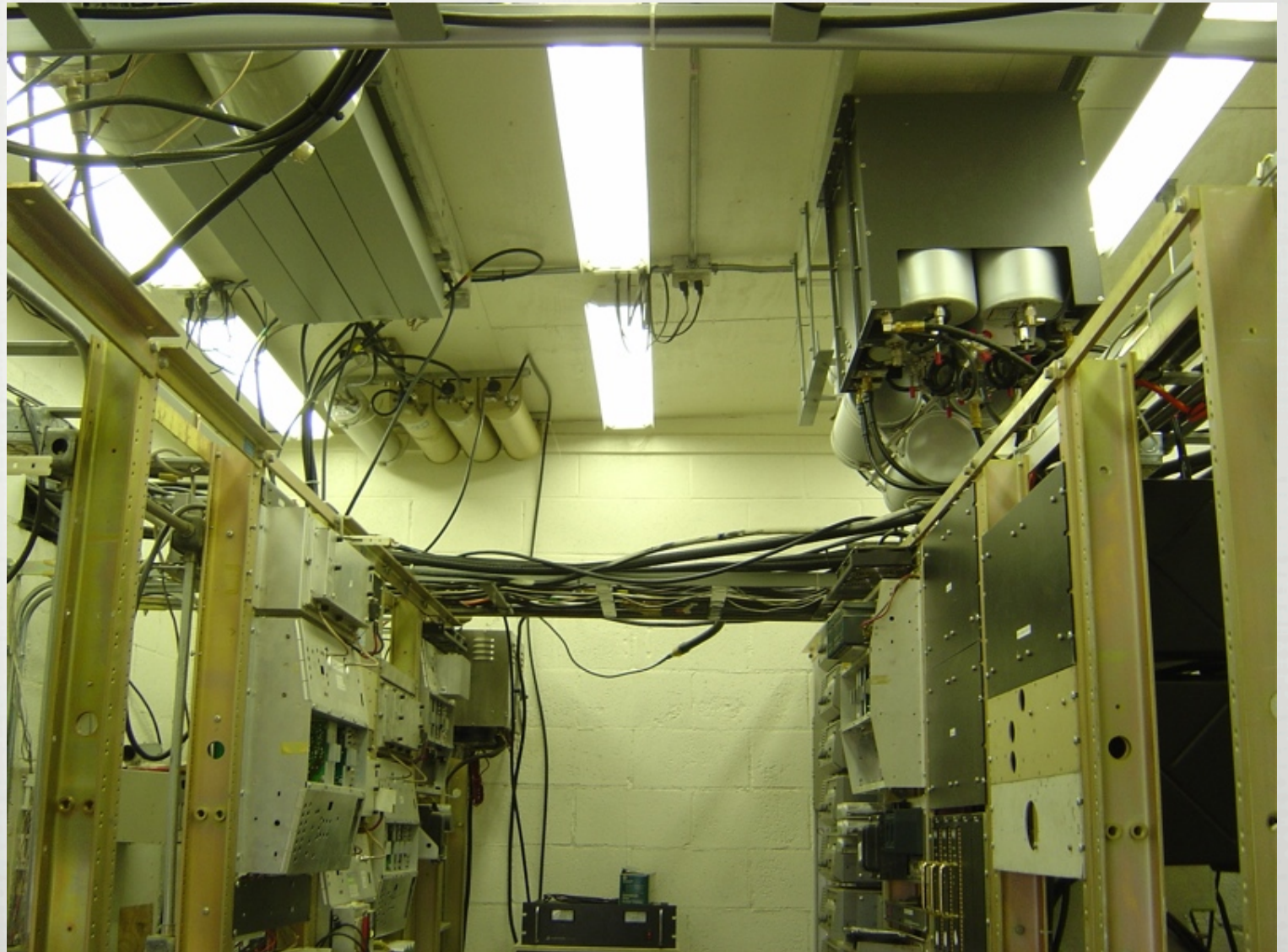
INSIDE THE BUILDING

□ VIEW FROM
THE DOOR



BUILDING CEILING

- RF CAVITIES ON THE CEILING



VIEWS

- OVER
MODJESKA
PEAK TO
IRVINE
LAKE



SUNSET OVER PACIFIC



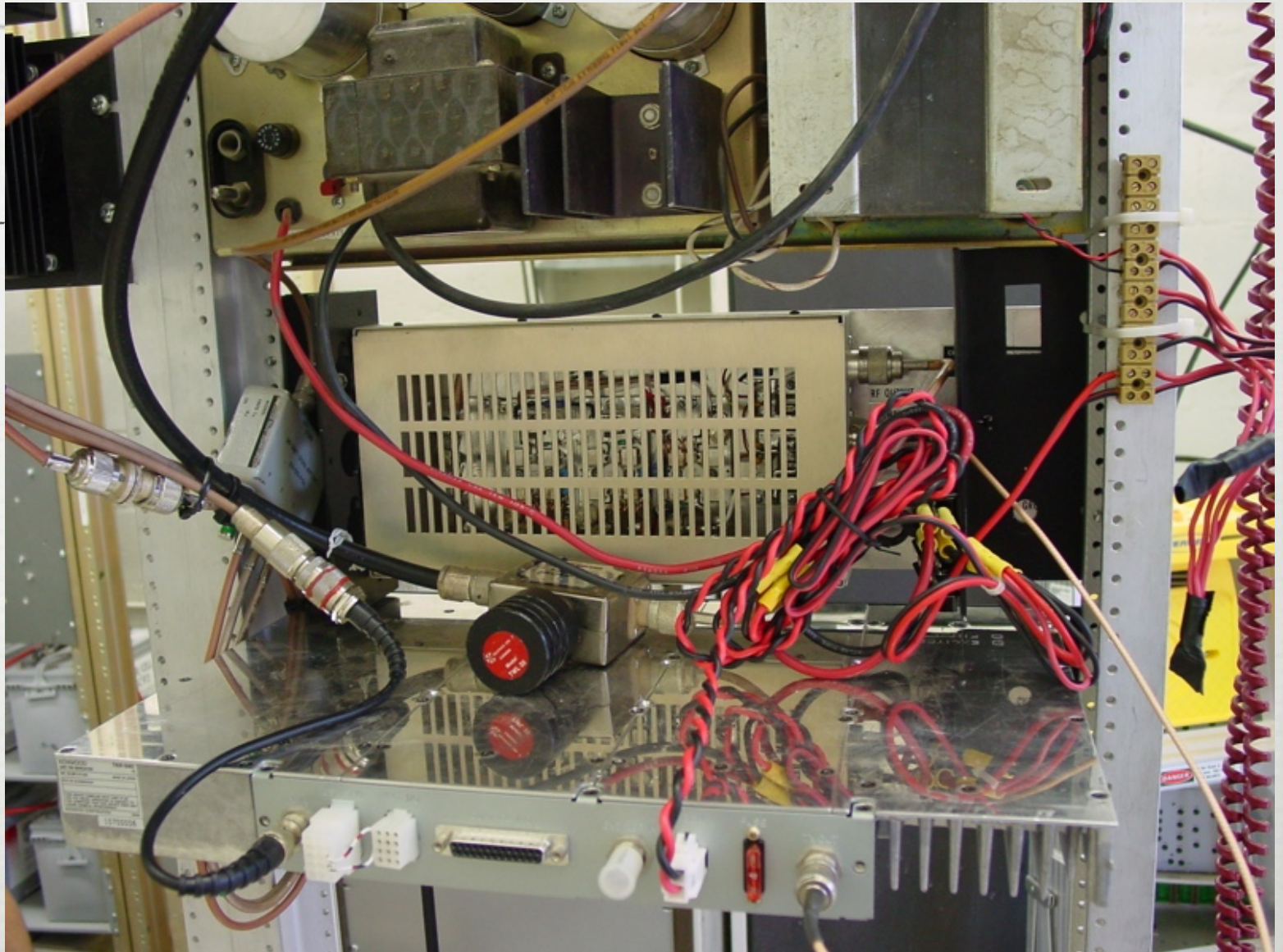
USGS BENCHMARK AT THE TOP

- IN A BLOCK OF CEMENT AT THE BASE OF WHAT USED TO BE A FIRE LOOKOUT TOWER (NOW LONG GONE)



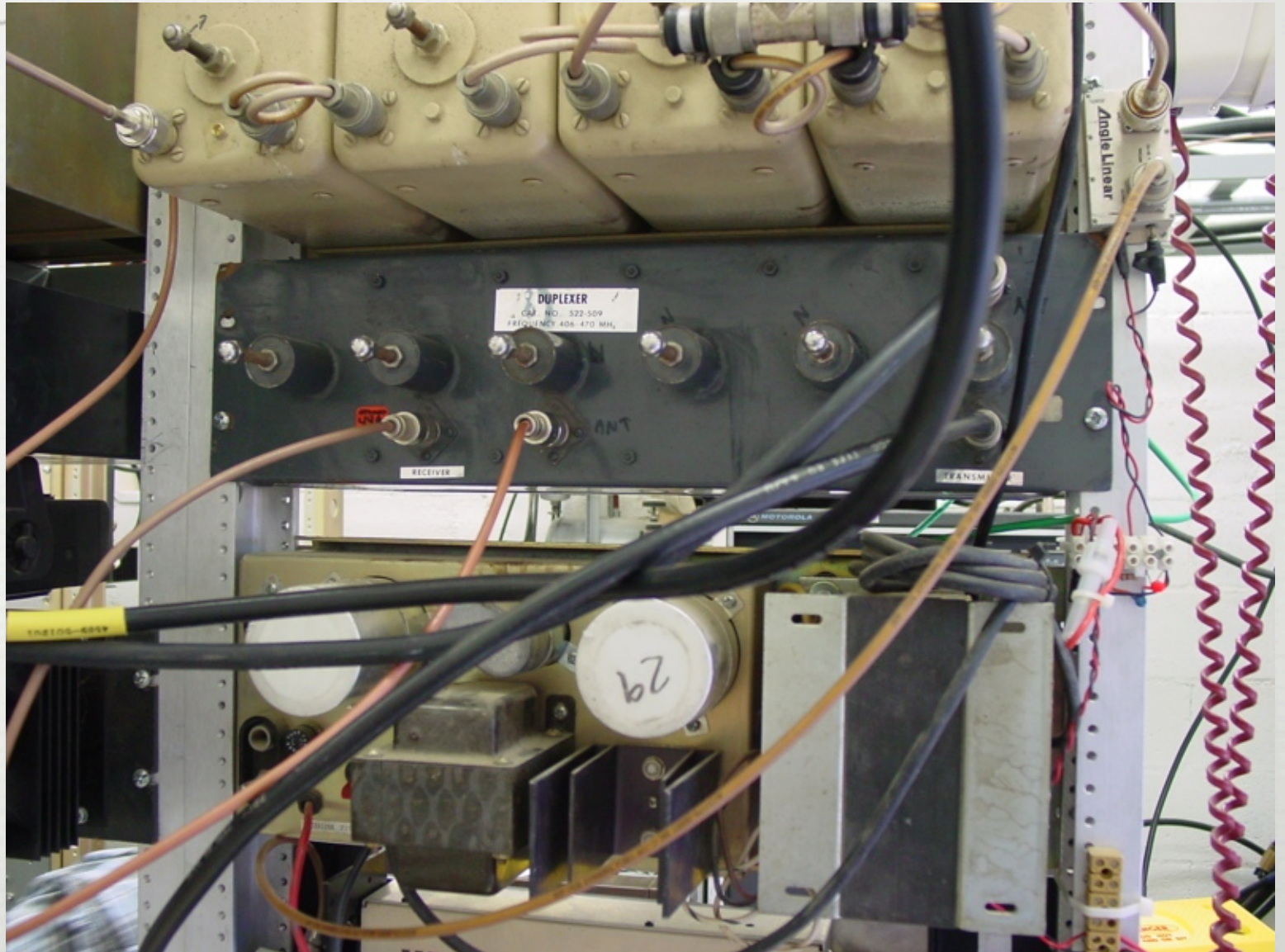
MOST OF REPEATER

- FERRO-
RESONANT
POWER
SUPPLY
- RF
AMPLIFIER
- CIRCULA-
TOR
- REPEATER



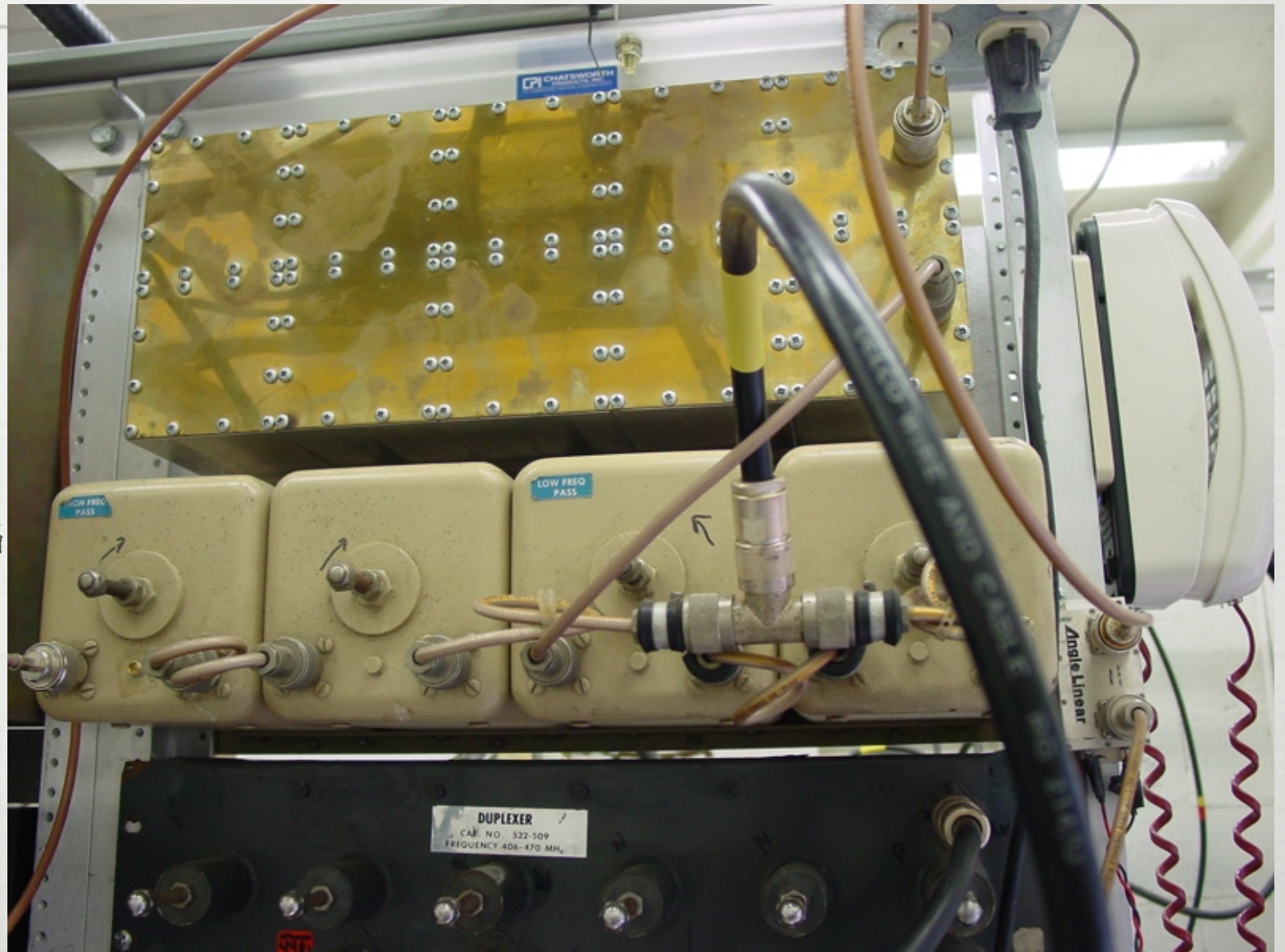
RF FILTERING

- FILTERS
- DUPLEXER
- POWER SUPPLY

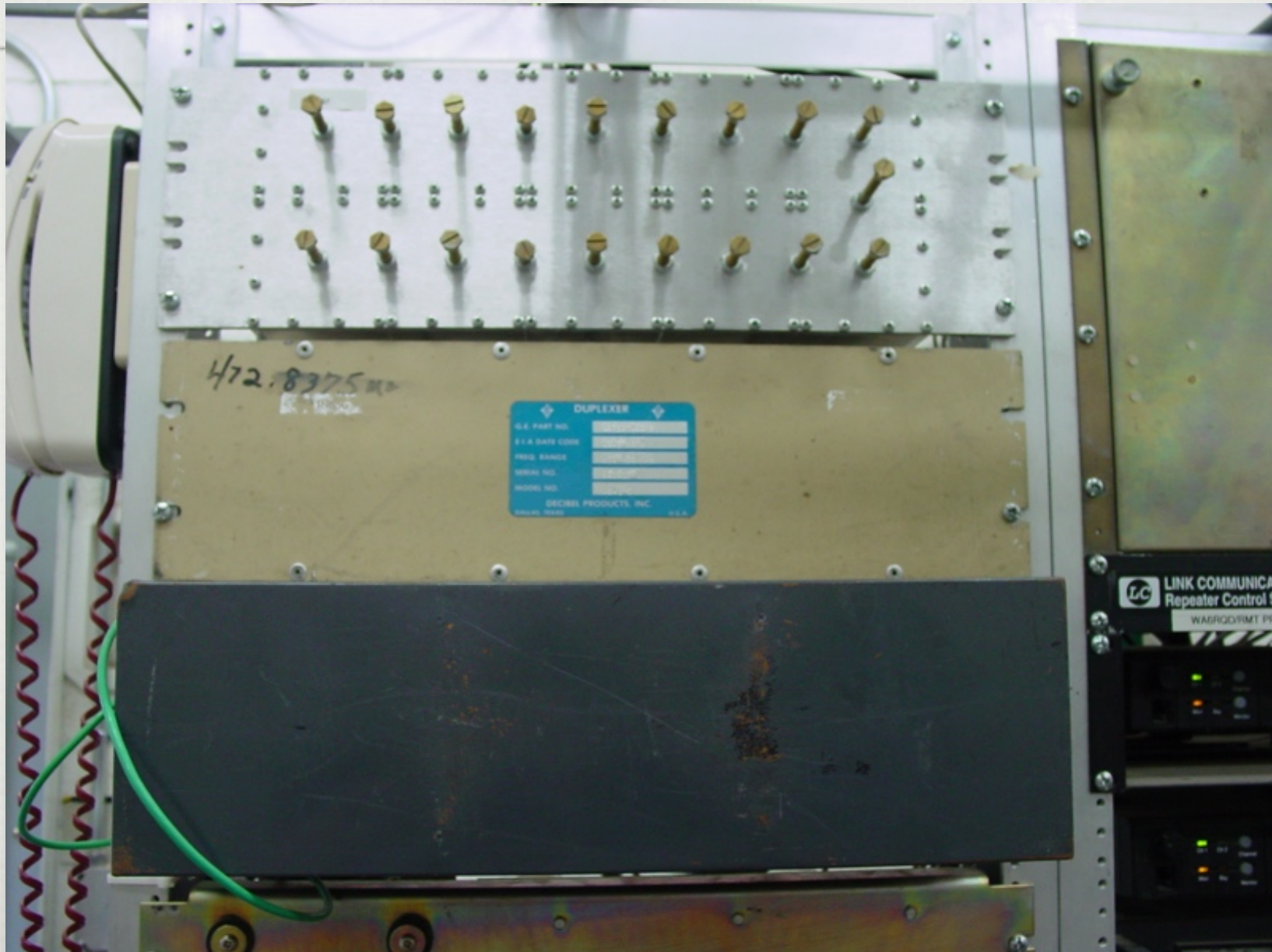


BANDPASS FILTER

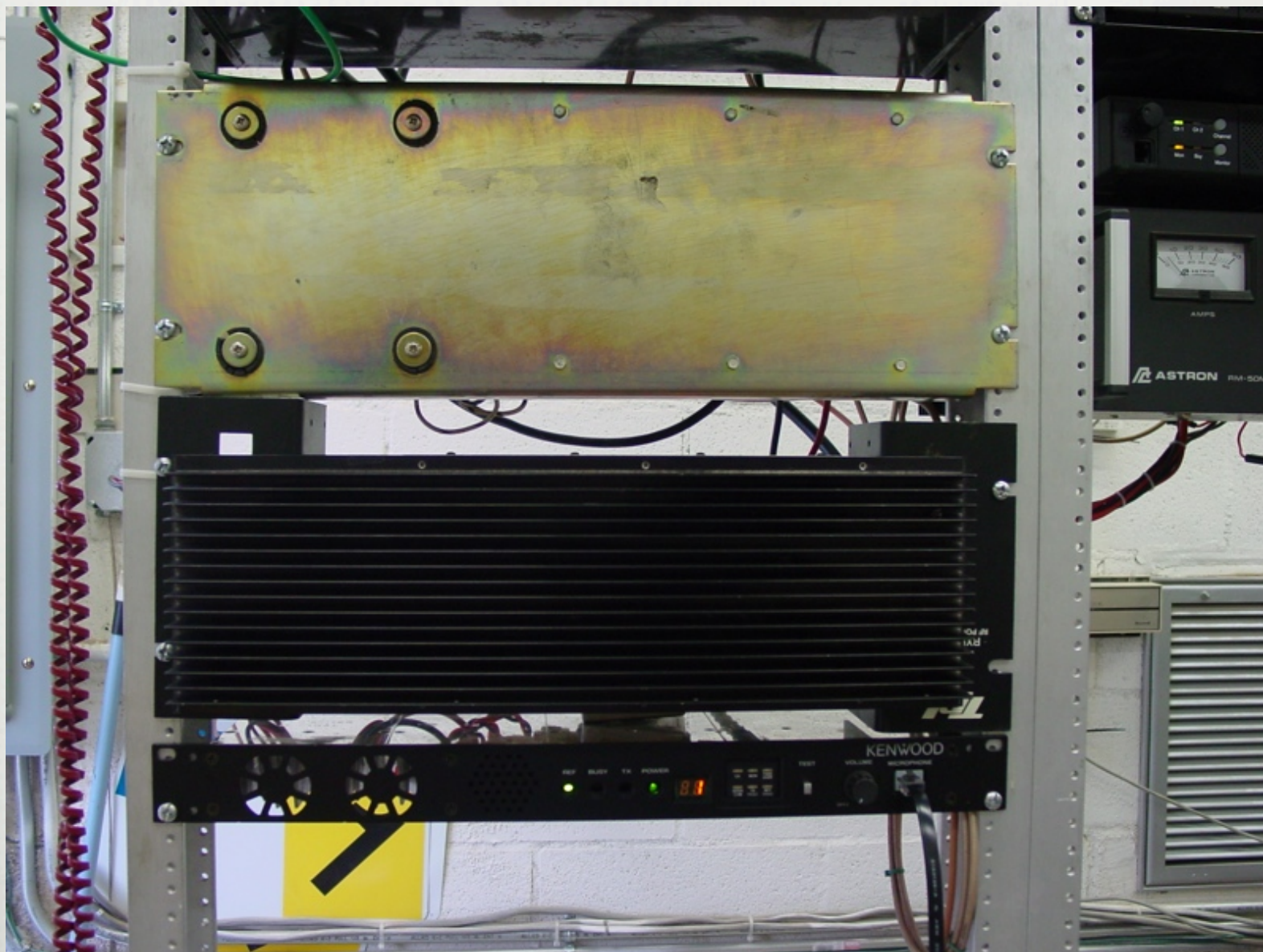
□ STILL
MORE
FILTERING



FRONT OF RACK (TOP)



RACK FRONT (BOTTOM)



RF CAVITIES



RACK SIDE PROFILE



GOING OUTSIDE

CONTROLLED BURN AREA



TOWER ON LEFT



POLES AND TOWERS



WORKING ON TOWER

- TIE OFF WITH SLINGS
- ROPE AND BUCKET TO MOVE TOOLS AND SUPPLIES



THE END

